



Bord Na Mona

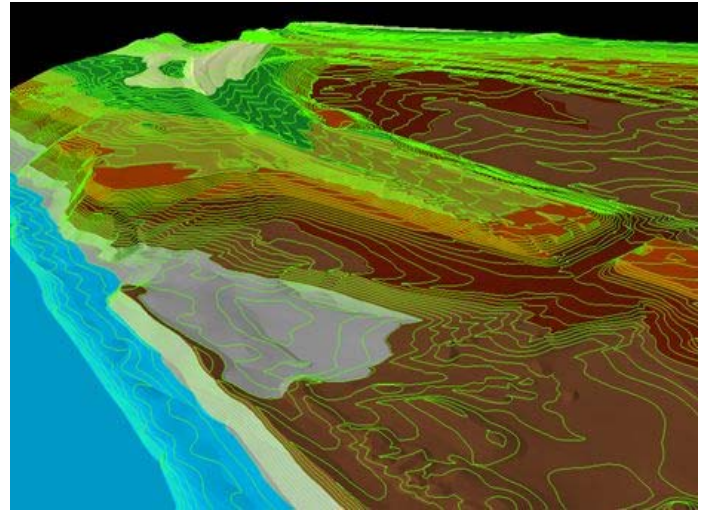
Introduction

Bord Na Móna is Ireland's leading environmentally responsible integrated utility service provider encompassing electricity, heating, resource recovery, water, growing media and related services.

Project Summary

Bord Na Mona makes extensive use of OSi digital mapping and air flow orthophotography and Lidar imagery for the planning and management of their peat and bog resources. Bord Na Mona has 80,000 HA of bog and the use of GI technology helps them to improve bog management logistics and peat transport.

Lidar mapping allows Bord Na Mona to create strategic plans for the management of the remaining bog resources and plan the development of new sustainable products and services in the future.



OSi Data Bases employed:

- Large Scale Mapping
- Small and Medium Scales Mapping
- High and low level imagery and orthophotography
- Height models and Lidar models
- National Boundaries and small areas database